

Heated Garage/Warehouse/Workshop with Oil Separator in Floor



LIST PRICE

\$650,000.00
(\$53.61/SF)

Property Details

- Building: ± 12,125 SF
Land: ± 3.18 Acres
- Current floor plan includes many offices, conference rooms and large open areas that are ideal for multiple user workstations. Existing layout can be easily modified according to end user specs if desired. (See Attached Floor Plan)
- One of the file rooms is fire rated with block walls and a concrete ceiling
- Heated garage/warehouse/workshop has (4) Four 10 ft. high x 9 ft. wide overhead doors
- Located near many other professional offices and light industrial businesses just off Veterans Parkway near the I-72 exit (See attached Aerial Map)
- City Zoning: I-1 Light Industrial District
- 2017 Real Estate Taxes: \$25,318.58

Contact Our Team



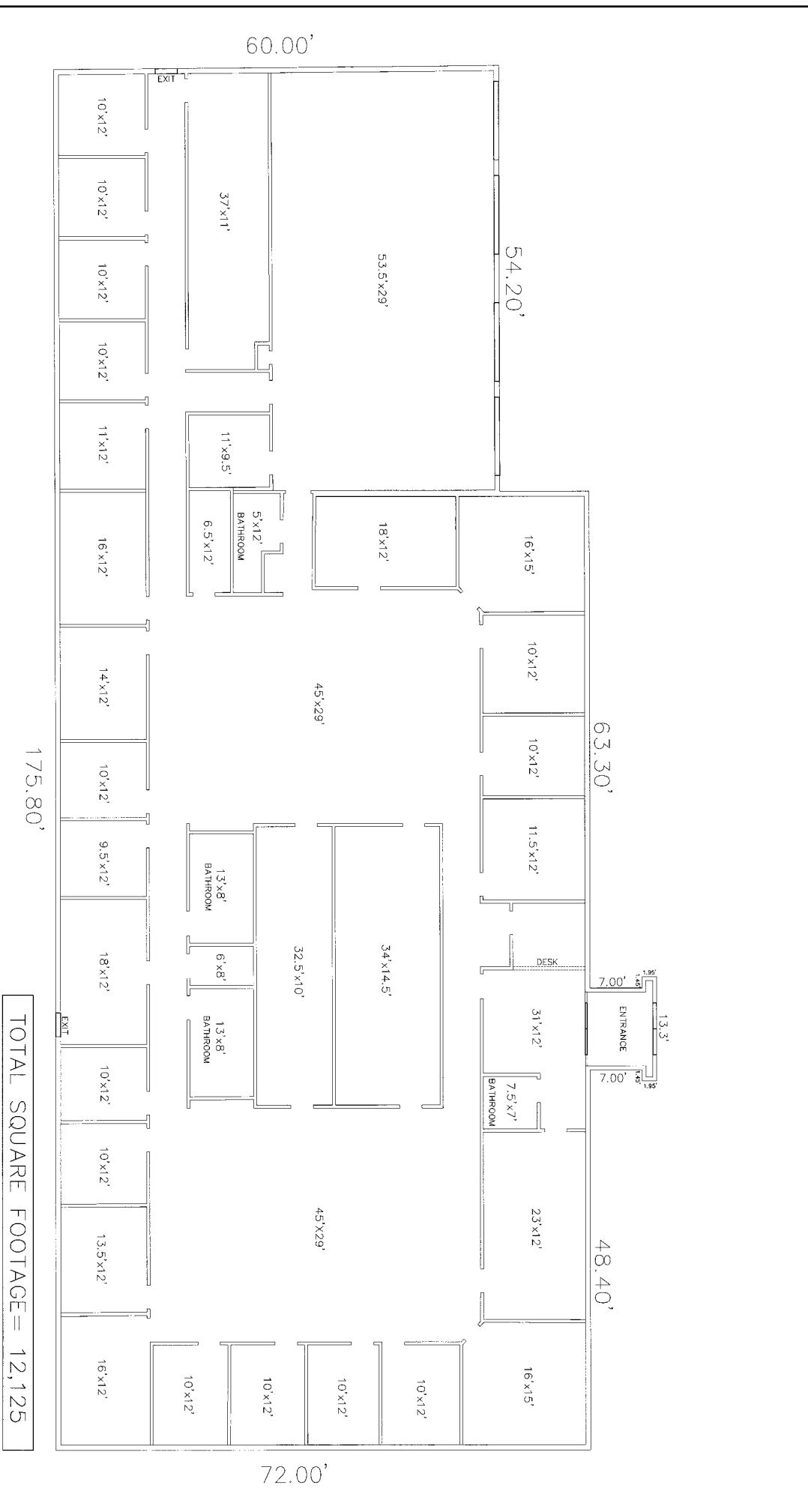
Sam Nichols
Managing Broker
(217) 494-0800
sam@truecres.com



Joe Sutherland
Broker
(217) 493-3897
joe@truecres.com



Nora Pollard
Broker
(217) 787-2800
nora@truecres.com



NO WARRANTY OR REPRESENTATION, EXPRESS OR IMPLIED, IS MADE AS TO THE ACCURACY OF THE INFORMATION CONTAINED HEREIN, AND THE SAME IS SUBMITTED SUBJECT TO ERRORS, OMISSIONS, CHANGE OF PRICE, RENTAL OR OTHER CONDITIONS, PRIOR SALE, LEASE OR FINANCING, OR WITHDRAWAL WITHOUT NOTICE, AND OF ANY SPECIAL LISTING CONDITIONS IMPOSED BY OUR PRINCIPALS. NO WARRANTIES OR REPRESENTATIONS ARE MADE AS TO THE CONDITION OF THE PROPERTY OR ANY HAZARDS CONTAINED THEREIN OR ANY TO BE IMPLIED.

4525 Wabash Ave., Suite B, Springfield, IL 62711
+1 217 787 2800 ♦ www.truecre.com

True

3501 Constitution Drive

Photos



NO WARRANTY OR REPRESENTATION, EXPRESS OR IMPLIED, IS MADE AS TO THE ACCURACY OF THE INFORMATION CONTAINED HEREIN, AND THE SAME IS SUBMITTED SUBJECT TO ERRORS, OMISSIONS, CHANGE OF PRICE, RENTAL OR OTHER CONDITIONS, PRIOR SALE, LEASE OR FINANCING, OR WITHDRAWAL WITHOUT NOTICE, AND OF ANY SPECIAL LISTING CONDITIONS IMPOSED BY OUR PRINCIPALS. NO WARRANTIES OR REPRESENTATIONS ARE MADE AS TO THE CONDITION OF THE PROPERTY OR ANY HAZARDS CONTAINED THEREIN OR ANY TO BE IMPLIED.

4525 Wabash Ave., Suite B, Springfield, IL 62711
+1 217 787 2800 ♦ www.truecre.com

True

3501 Constitution Drive

Photos



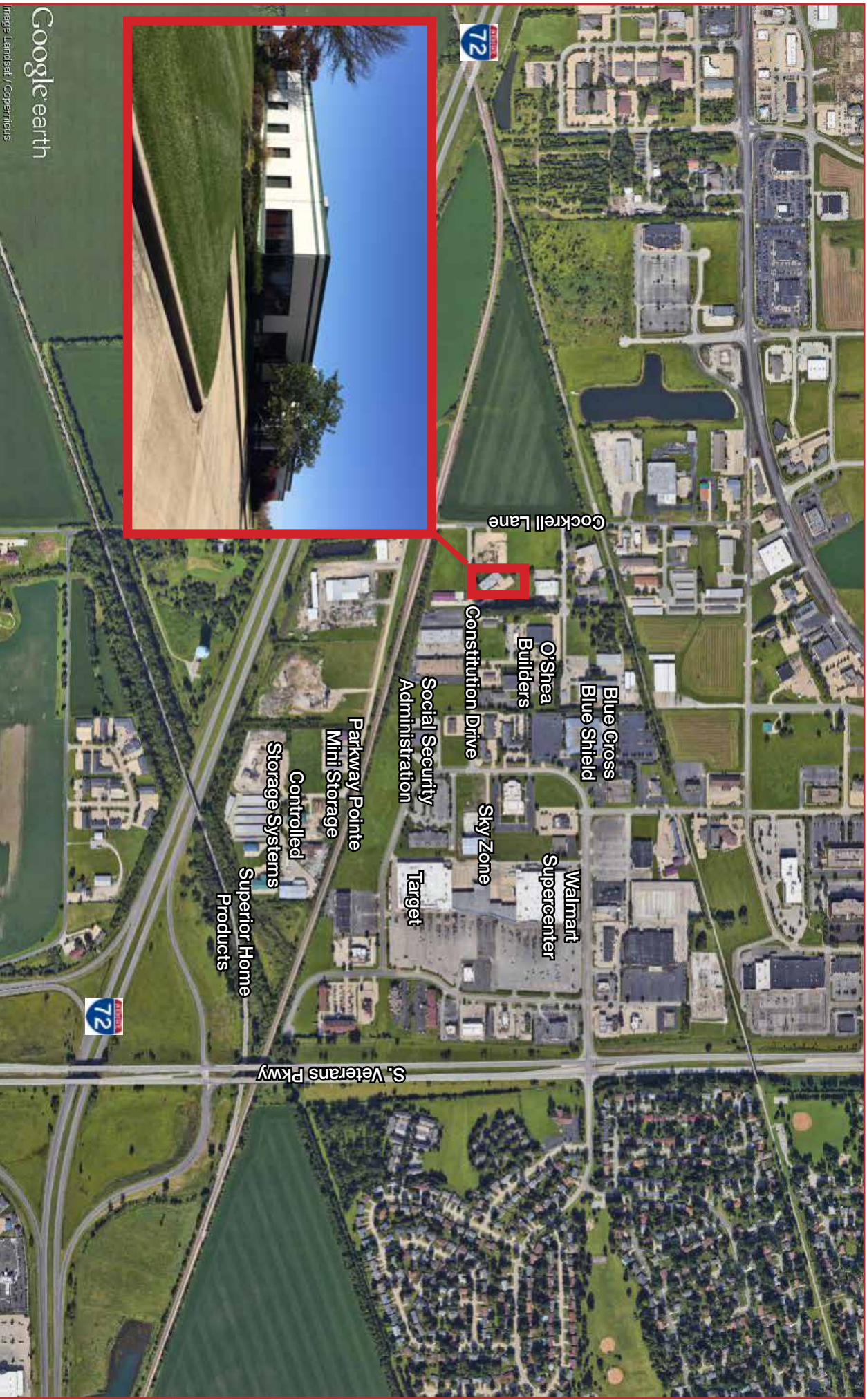
NO WARRANTY OR REPRESENTATION, EXPRESS OR IMPLIED, IS MADE AS TO THE ACCURACY OF THE INFORMATION CONTAINED HEREIN, AND THE SAME IS SUBMITTED SUBJECT TO ERRORS, OMISSIONS, CHANGE OF PRICE, RENTAL OR OTHER CONDITIONS, PRIOR SALE, LEASE OR FINANCING, OR WITHDRAWAL WITHOUT NOTICE, AND OF ANY SPECIAL LISTING CONDITIONS IMPOSED BY OUR PRINCIPALS. NO WARRANTIES OR REPRESENTATIONS ARE MADE AS TO THE CONDITION OF THE PROPERTY OR ANY HAZARDS CONTAINED THEREIN OR ANY TO BE IMPLIED.

4525 Wabash Ave., Suite B, Springfield, IL 62711
+1 217 787 2800 ♦ www.truecre.com

True

3501 Constitution Drive

Aerial



Google earth

Image Landsat / Copernicus

NO WARRANTY OR REPRESENTATION, EXPRESS OR IMPLIED, IS MADE AS TO THE ACCURACY OF THE INFORMATION CONTAINED HEREIN, AND THE SAME IS SUBMITTED SUBJECT TO ERRORS, OMISSIONS, CHANGE OF PRICE, RENTAL OR OTHER CONDITIONS, PRIOR SALE, LEASE OR FINANCING, OR WITHDRAWAL WITHOUT NOTICE, AND OF ANY SPECIAL LISTING CONDITIONS IMPOSED BY OUR PRINCIPALS. NO WARRANTIES OR REPRESENTATIONS ARE MADE AS TO THE CONDITION OF THE PROPERTY OR ANY HAZARDS CONTAINED THEREIN OR ANY TO BE IMPLIED.

4525 Wabash Ave., Suite B, Springfield, IL 62711
+1 217 787 2800 ♦ www.truecre.com

Sangamon County GIS



October 23, 2018



Office Of
Supervisor of Assessments

Sangamon County GIS

Although strict accuracy standards have been employed in the compilation of this map, Sangamon County does not warrant or guarantee the accuracy of the information contained herein and disclaims any and all liability resulting from any error or omission in this map.



Parcel Number: 21130175005
Copyright 2013

NO WARRANTY OR REPRESENTATION, EXPRESS OR IMPLIED, IS MADE AS TO THE ACCURACY OF THE INFORMATION CONTAINED HEREIN, AND THE SAME IS SUBMITTED SUBJECT TO ERRORS, OMISSIONS, CHANGE OF PRICE, RENTAL OR OTHER CONDITIONS, PRIOR SALE, LEASE OR FINANCING, OR WITHDRAWAL WITHOUT NOTICE, AND OF ANY SPECIAL LISTING CONDITIONS IMPOSED BY OUR PRINCIPALS. NO WARRANTIES OR REPRESENTATIONS ARE MADE AS TO THE CONDITION OF THE PROPERTY OR ANY HAZARDS CONTAINED THEREIN OR ANY TO BE IMPLIED.

4525 Wabash Ave., Suite B, Springfield, IL 62711
+1 217 787 2800 ♦ www.truecreas.com